

**NOTE: Retain this sheet for future reference**

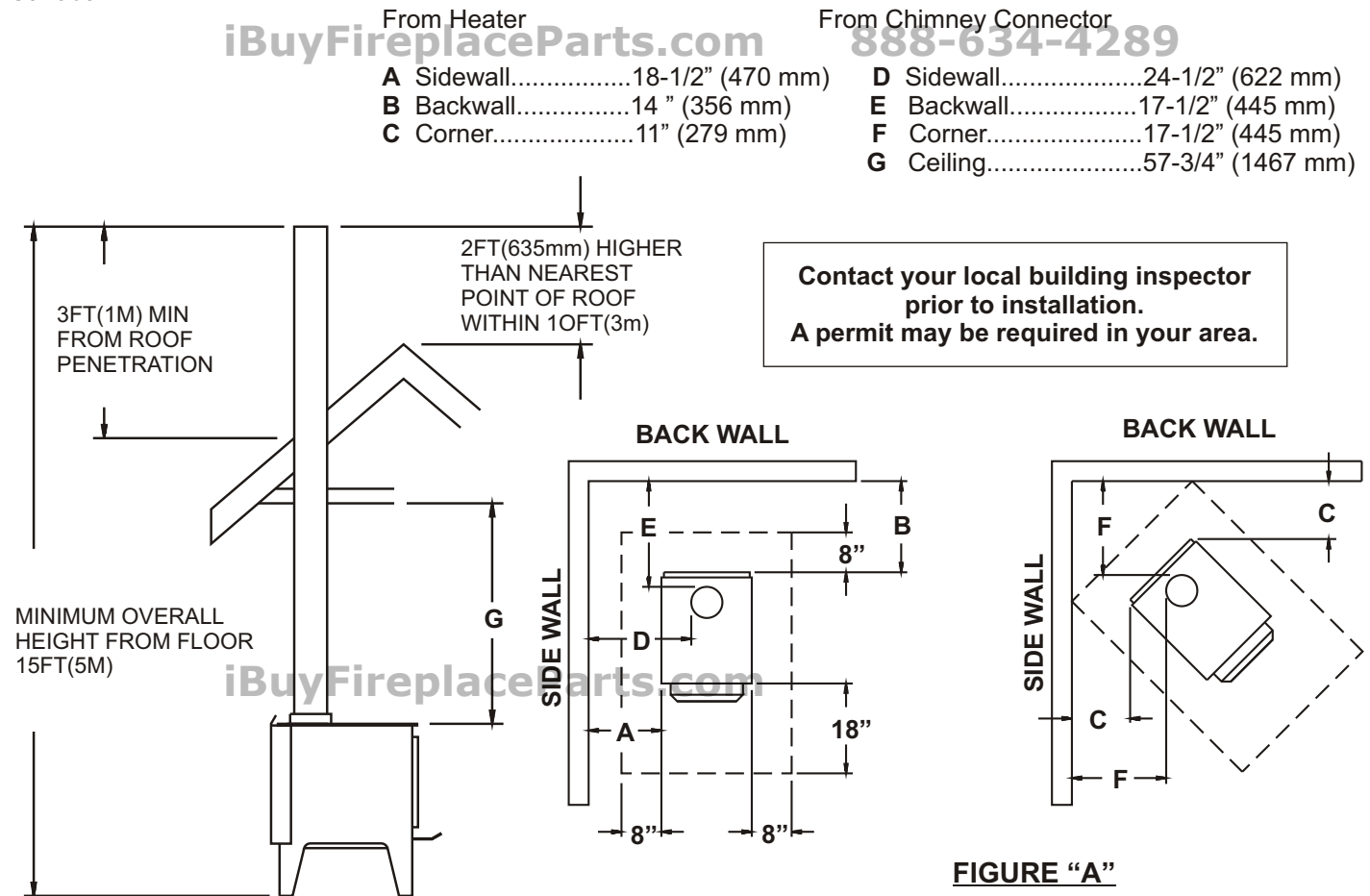
## 6" Flue Required

### Model No. FW250030

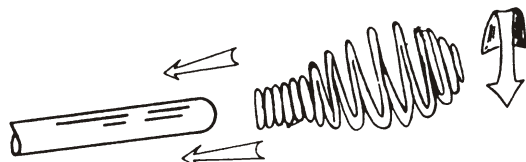
This unit has been listed by Warnock  
Hersey Limited to meet or exceed  
CSA B 366, 2M and ULC S-627  
Canada

A MINIMUM CLEARANCE OF 18 INCHES (457mm) TO THE CHIMNEY  
CONNECTOR MAY BE REQUIRED BY THE AUTHORITY HAVING JURISDICTION.

Figure A: Clearance from combustible constructions



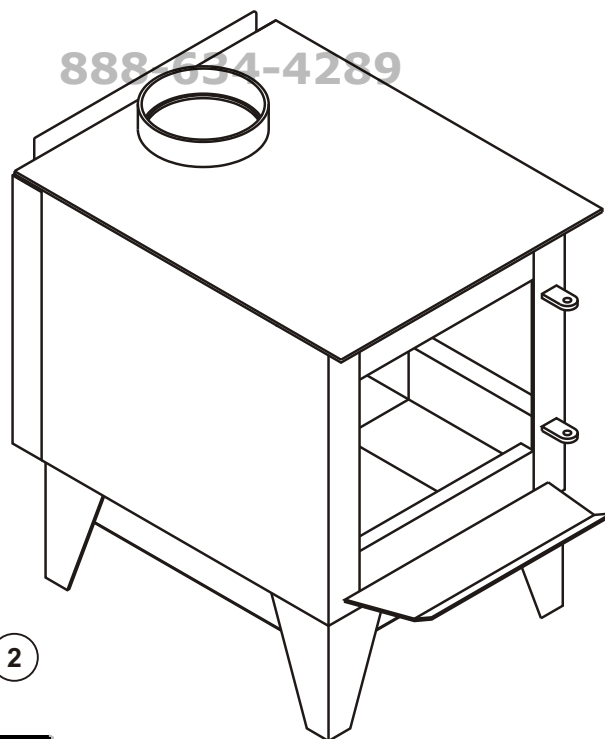
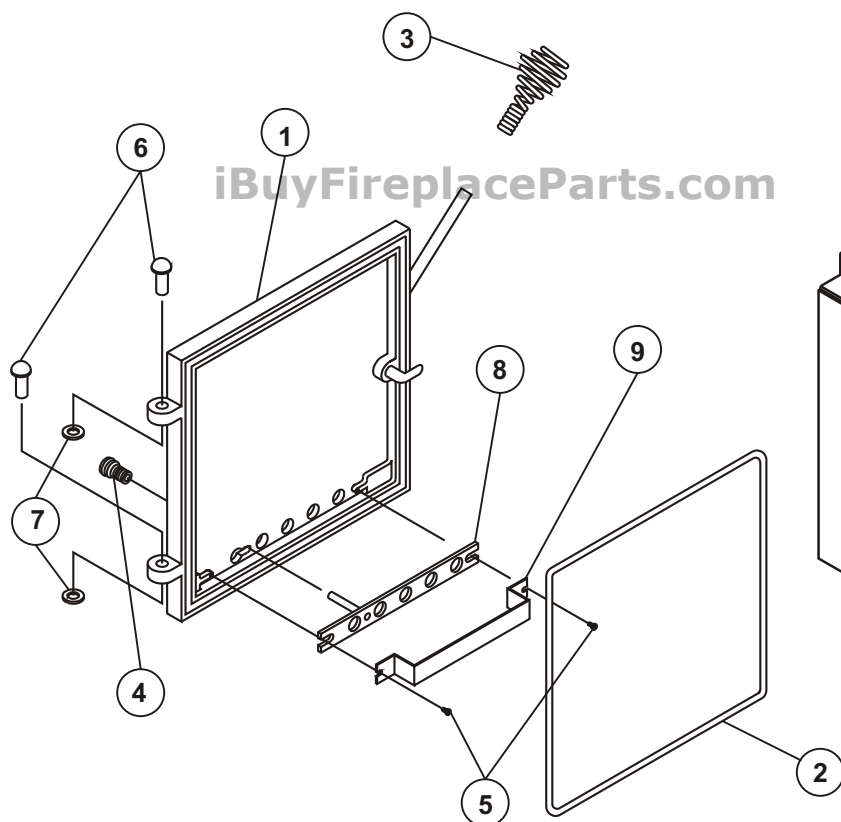
Unit must be placed on a noncombustible floor protection equivalent to 3/8"(9mm) millboard extending 18" (457mm) in front and 8" (203mm) to side and back of unit per manufacturer's instructions. Consult your local building authorities for further information.



### INSTALLATION OF SPRING HANDLE

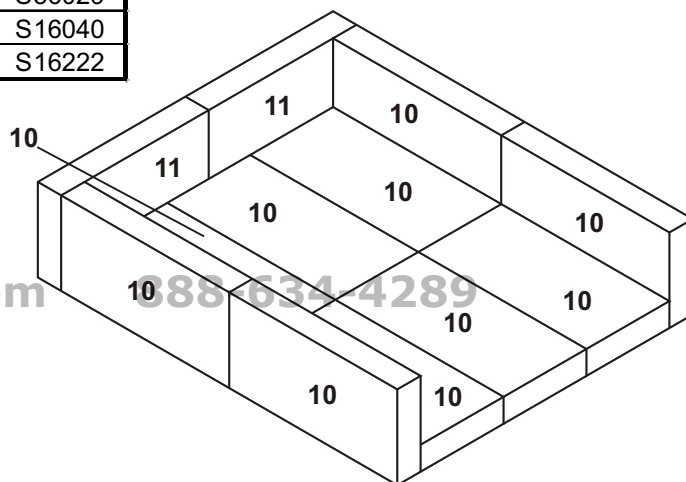
Twist spring handle in counter clockwise motion while pushing on to handle: the spring handle will "thread" down to desired location.

**CAUTION:** Do not open fire-door to a point where it would be in contact with the combustible sidewall. Open door slowly to avoid smoke roll out.



### PARTS LIST

ITEM NO.	QTY	DESCRIPTION	PART NO.
1	1	DOOR ASSEMBLY	S41425
2	4.5ft	1/2" DOOR GASKET ONLY	S15014
3	1	SPRING HANDLE	S11007
4	1	AIR CONTROL SPRING HANDLE	S11008
5	2	SCREW #10 X 1/2	S11086
6	2	HINGE PIN	S11005
7	2	PUSH NUT	S11090
8	1	DRAFT SLIDER BAR	S41426
9	1	SLIDE BAR RETAINER	S36029
10	10	FIREBRICK LT 9" x 4-7/16" x 1-1/4"	S16040
11	2	FIREBRICK LT 7-3/4" x 4-7/16" x 1-1/4"	S16222



BRICK PATTERN