

CFM Corporation

Part No S19035 Rev10

NOTE: Retain this sheet for future reference

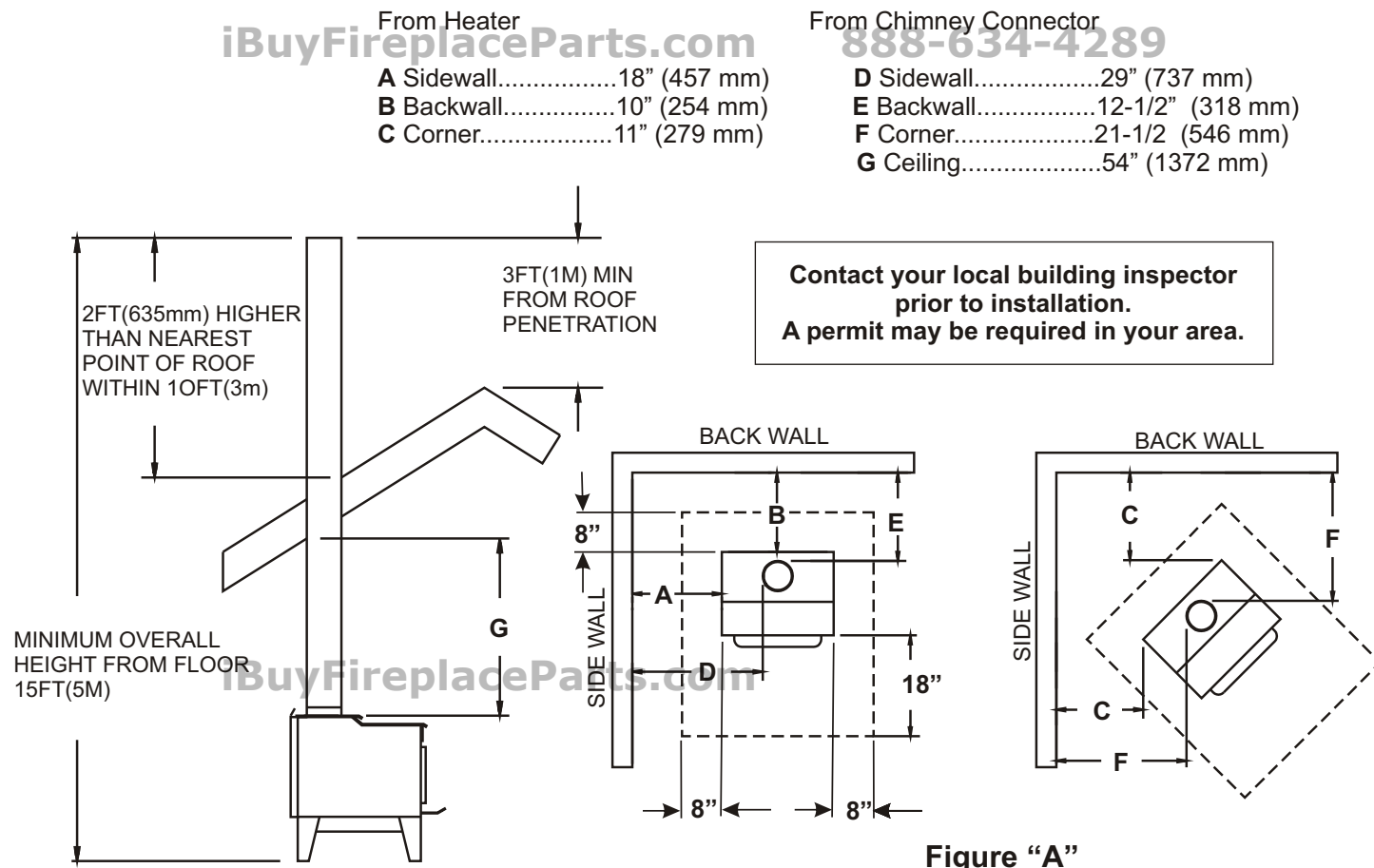
A minimum clearance of 18" (457mm) to the chimney connector may be required by the authority having jurisdiction.

6" Flue Required

Model No. S170 / S170P

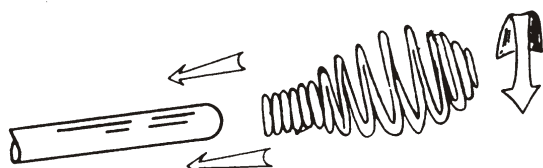
This unit has been listed by Warnock
Hersey Limited to meet or exceed
CSA B 366, 2M and ULC S-627 Canada

Figure A: Clearance from combustible constructions



Unit must be placed on a noncombustible floor protection equivalent to 3/8" (9.5mm) millboard extending 18" (457mm) in front and 8" (203mm) to side and back of unit per manufacturer's instructions.

Consult your local building authorities for further information.



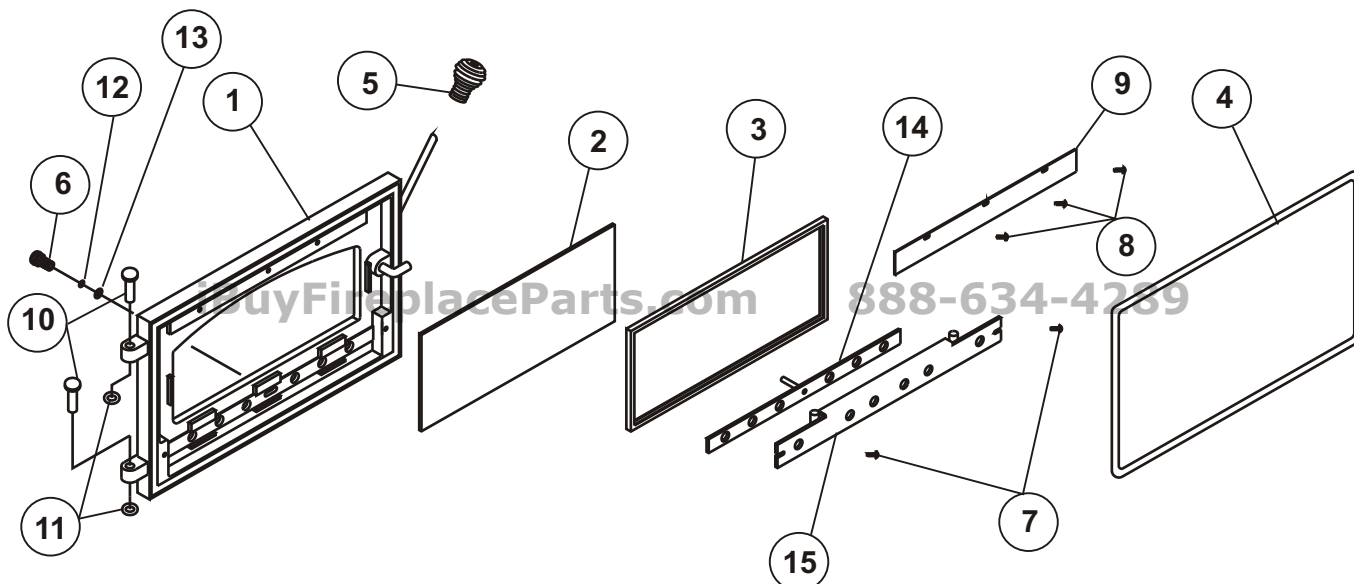
HANDLE

Twist spring handle **SPRING** in counter clockwise motion while pushing on to handle; spring handle will "thread" down to desired location.

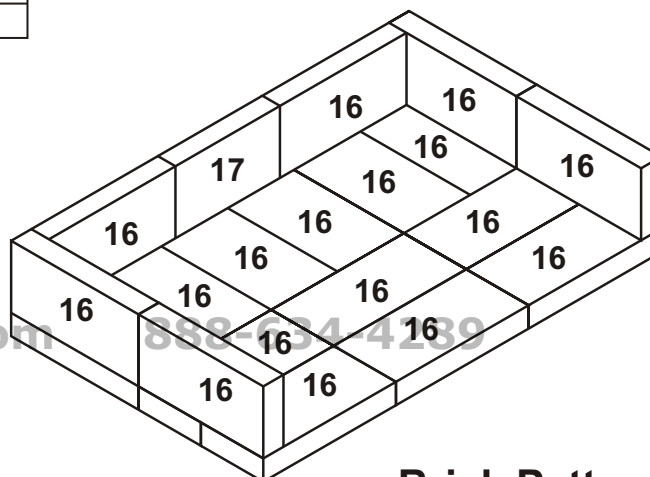
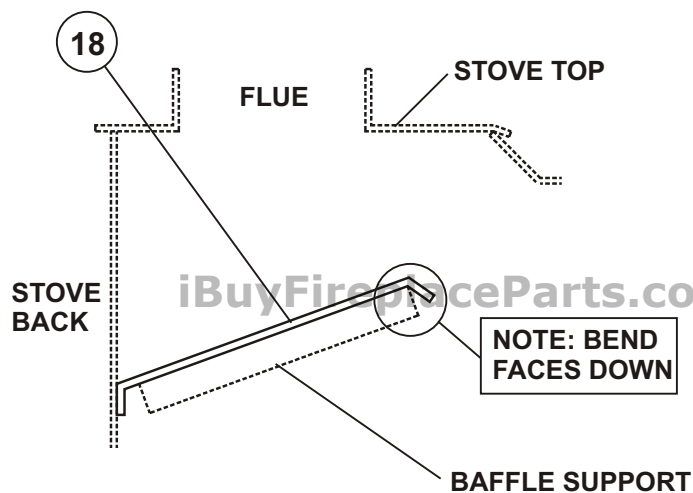
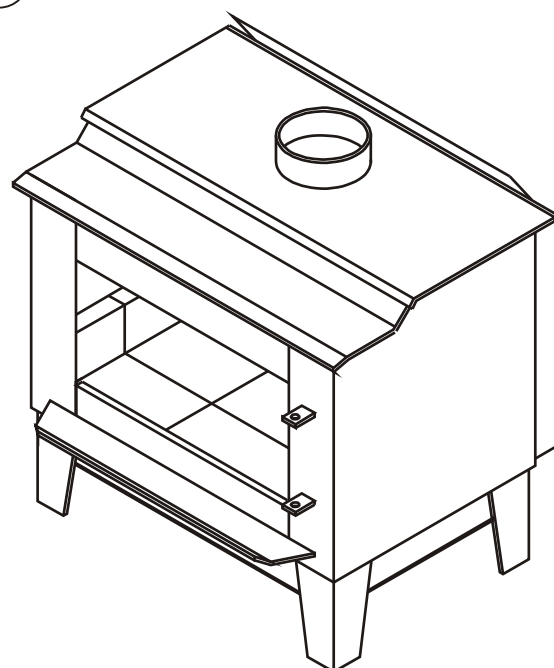
CAUTION: Do not open fire-door to a point where it would be in contact with the combustible sidewall.

OPTIONAL FAN

An optional heat exchange blower is available for this wood burning appliance. To order please see the local dealer where you purchased your appliance.



PARTS LIST			
ITEM	QTY	DESCRIPTION	PART NO.
1	1	DOOR ASSEMBLY	S31040
1	1	DOOR (NO GLASS)	S41027
2&3	1	GLASS AND GASKET	S31113
3	4.0ft	1/8" GLASS GASKET	S15001
4	5.5ft	5/8" DOOR GASKET	S15011
5	1	SPRING HANDLE	S11007
6	1	AIR CONTROL SPRING HANDLE	S11008
7	2	SCREW	S11089
8	3	SCREW	S11086
9	1	GLASS CLIP	S37026
10	2	HINGE PIN	S11005
11	2	PUSH NUT	S11090
12	1	PUSH NUT	S11293
13	1	1/4 FLAT WASHER	S11436
14	1	DRAFT SLIDER BAR	S41061
15	1	SLIDE BAR RETAINER	S41094
16	18	FIREBRICK LT 9"x4-7/16"x1-1/4"	S16040
17	1	FIREBRICK LT 6-1/4"x4-7/16"x1-1/4"	S16051
18	1	BAFFLE	S32044



Brick Pattern