

## IMPORTANT INFORMATION

The installation, including provisions for combustion and ventilation air, must conform with local codes or, in the absence of local codes, with the National Fuel Gas Code, ANSI Z223.1 (latest edition).

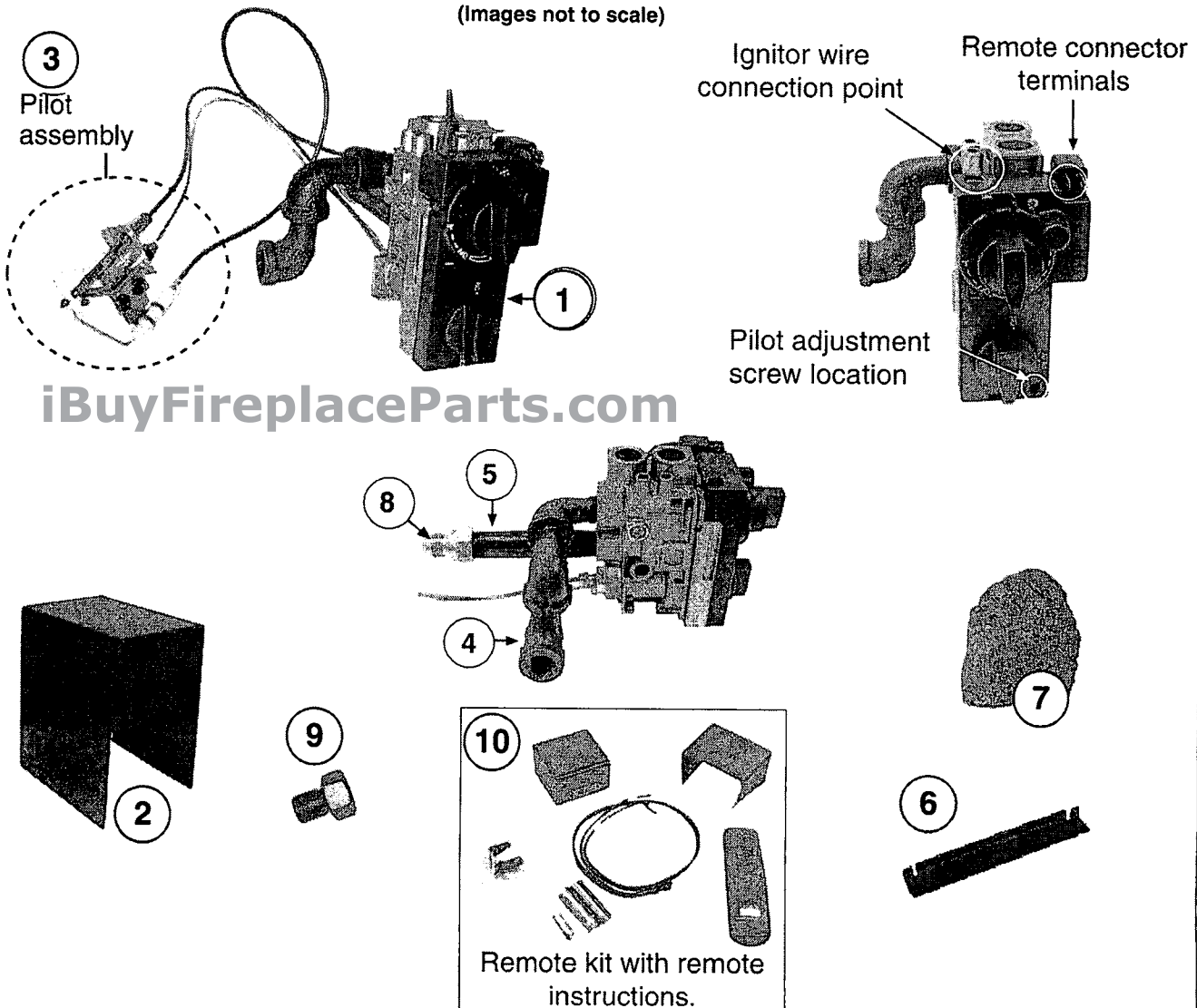
This appliance and its individual shutoff valve must be disconnected from the gas supply piping system when testing at pressures exceeding  $1/2$  psig. Do this by closing the gas supply valve, required by NFPA 54.

This appliance must be isolated from the gas supply piping system by closing its individual manual shutoff valve during any testing of the gas supply system at test pressures up to and including  $1/2$  psig.

**WHEN GLASS FIREPLACE ENCLOSURES (DOORS) ARE USED, OPERATE THE GAS LOG SET WITH THE GLASS DOORS OPEN; BOTH SIDES IF FIREPLACE IS SEE-THRU TYPE.**

## PARTS LIST

(Images not to scale)



Item No.	Description
1	Safety pilot valve, natural gas
or	Safety pilot valve, propane gas
2	Heat shield (fits over valve)
3	Pilot assembly (natural gas)
or	Pilot assembly (propane)
4	Street elbow $3/8"$ (black)

Item No.	Description
5	Nipple, $3/8"$ x $3 1/2"$ (black)
6	Flame diverter bracket
7	Wood chip
8	Adaptor
9	Fuel injector (Natural) or Air mixer (propane)
10	VR-1A Remote kit